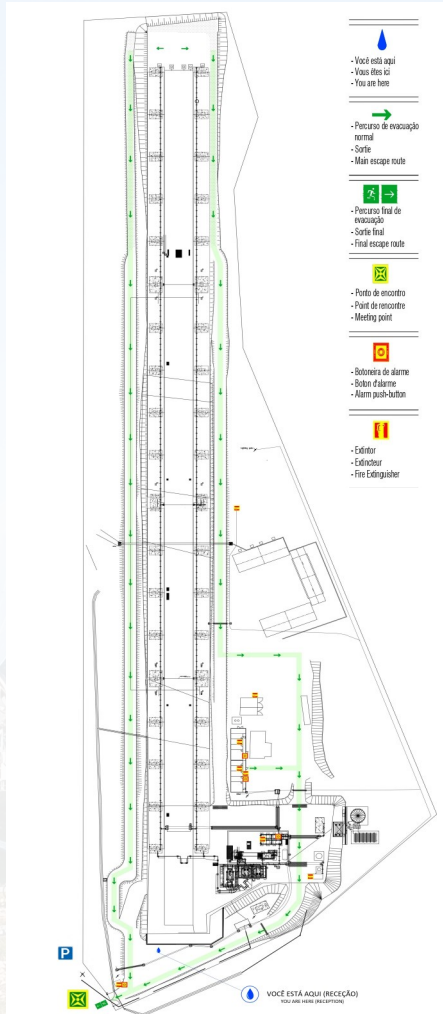


## WHERE IS THE MEETING POINT ?



112

Telefone de Emergência

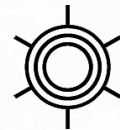
Téléphone de L'Urgence

Emergency Telephone

## HOW SHOULD YOU ACT IF YOU DETECT ANY ANOMALY ?

- Keep calm.
- Immediately notify the person in charge accompanying you.
- Never endanger your physical integrity.

THANK YOU FOR YOUR VISIT  
AND COLLABORATION



CATEDRA ENERGIAS  
RENOVÁVEIS



Deutsches Zentrum  
für Luft- und Raumfahrt  
German Aerospace Center

Polo da Mitra da Universidade de Évora,

Edifício Ário Lobo de Azevedo.

7000-083 Nossa Senhora da Tourega, Portugal

[catedraER@uevora.pt](mailto:catedraER@uevora.pt)

Phone: +351 266 740 800

## Évora Molten Salts Platform (EMSP)



## GENERAL RULES FOR VISITORS



UNIVERSIDADE  
DE ÉVORA



CATEDRA ENERGIAS  
RENOVÁVEIS



DLR

Deutsches Zentrum  
für Luft- und Raumfahrt  
German Aerospace Center



For your own safety and as a form of prevention in cases of emergency, you will receive this document where the general and safety rules of our installation are explained, as well as the risks you may encounter.

### GENERAL RULES

The Évora Molten Salt Platform (EMSP) visitors must respect the basic safety norms as well as the norms received from the guide and the responsible of the different facilities, with the purpose of guaranteeing the well-being and physical integrity of all the people present in the installation.

To ensure an adequate level of security throughout the visit, a set of rules to be respected by the visitor are presented below:

- People with some type of hearing, visual, allergic, etc., impairment should communicate this information in advance so that the measures to be taken can be properly evaluated.

- For the visitors safety, going outside of the reception area may require the use of PPE (safety boots, helmet, vest and long-sleeved shirt or other items considered appropriate) to be provided on site in accordance with the security protocols of the installation and mandatory use by visitors.
- Respect all signs.
- Visitors must wait at the entrance of the facilities until the guide meets them. The guide will accompany you throughout the visit.
- Visitors must maintain order within the group and not abandon it.
- Audio, video or image recordings are expressly conditioned to the authorization of the visits guide, which will always include conditions related to the places and/or equipment to which the authorization refers.
- Do not leave objects behind during the visit.
- It is forbidden to set fires or sparks anywhere in the installation.
- Activities that put the physical integrity of the group and/or plant workers at risk will not be carried out.

### HOW TO PROCEED IN EMERGENCY CASES AND EVACUATION NEEDED

In case of an emergency, EMSP has a Self-Protection Measures Manual according to the Legal Regime of Security against Fire in Buildings, Decree-Law No. 220/2008 of November 12, with instructions on how to proceed in emergency cases, which the guide will follow to ensure a safe evacuation for all visitors and plant workers.

Among others, the following standards stand out:

- Keep calm and avoid panic; leave without running or screaming.
- Do not enter a danger zone.
- Do not go back to collect personal items.
- Helping the weakest people.
- Use the indicated evacuation routes.
- Follow the instructions of the person in charge of the evacuation.
- Go to the meeting point indicated on the emergency plant and wait for instructions.